

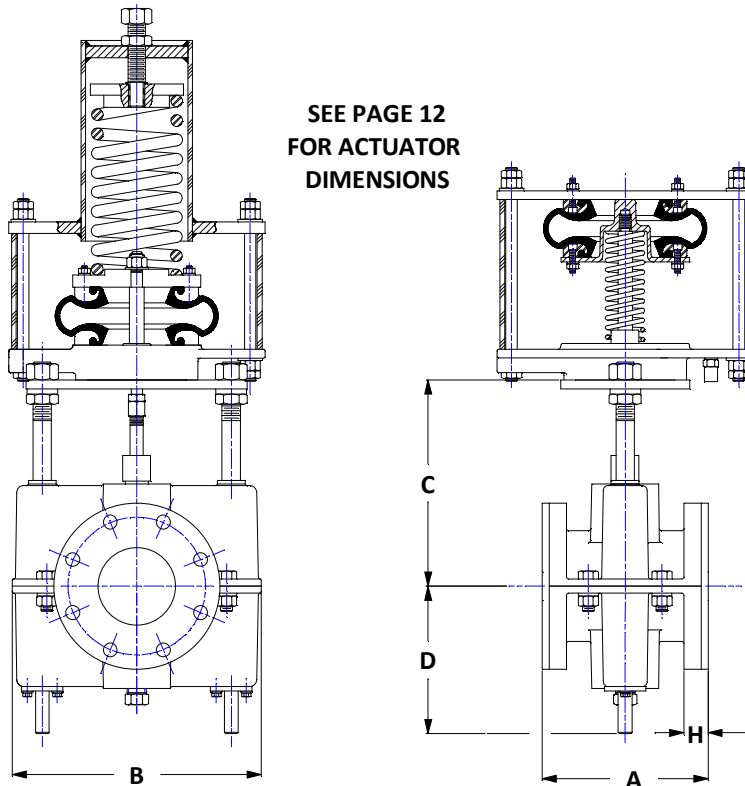
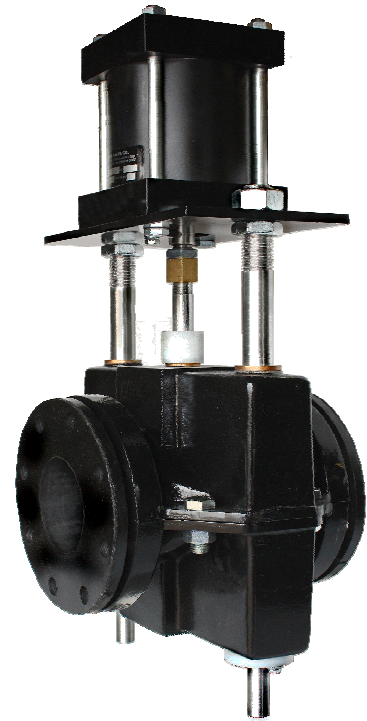
# Series DAC

## Full Round, Dual Pinch, Enclosed Construction, Pneumatically Operated

- Clog resistant full round opening.
- Low pressure drop
- No packing
- Drop tight closure
- On/Off or throttling service
- Fail Open or Fail Closed pneumatic actuators

### Specifications:

- Flanges: ANSI STD 125/150 lbs
- Housing: Cast iron, ASTM A48, class 35 ( valve sizes up to 10" )  
Ductile iron, ASTM 65-45-12 ( valve sizes 12" and up )
- Stem & guide rods: 303 stainless steel
- Pinch bars: Ductile iron, ASTM 65-45-12



### Options:

- Sleeve elastomer
- Epoxy paint
- ANSI STD 300 lbs flange
- 316 stainless steel stem
- Secondary containment package
- Positioners
- Solenoid valves
- Limit switches

All dimensions are in inches.

| SIZE   | 2     | 3     | 4       | 6, SH. | 6, LG. | 8     | 10      | 12    | 14     | 16    | 18    | 20    | 24    | 30    |
|--------|-------|-------|---------|--------|--------|-------|---------|-------|--------|-------|-------|-------|-------|-------|
| A      | 7.00  | 8.00  | 9.00    | 10.50  | 17.75  | 21.37 | 26.50   | 29.00 | 28.00  | 32.00 | 36.00 | 40.00 | 48.00 | 60.00 |
| B      | 8.50  | 11.00 | 13.50   | 20.12  |        | 22.75 | 26.25   | 32.00 | 34.37  | 40.50 | 43.75 | 50.50 | 60.50 | 78.00 |
| C      | 10.06 | 11.81 | 14.81   | 20.00  |        | 23.12 | 25.68   | 29.87 | 32.37  | 38.12 | 41.12 | 47.00 | 52.00 | 70.00 |
| D      | 5.25  | 6.56  | 8.00    | 11.62  |        | 14.62 | 16.68   | 20.12 | 22.18  | 26.50 | 28.50 | 32.15 | 35.00 | 40.00 |
| H      | 1.12  | 1.31  |         | 1.87   |        | 1.62  | 1.81    | 2.25  | 2.75   | 3.37  |       | 3.50  | 3.50  | 4.50  |
| P Max  | 200   | 175   | 150 psi |        |        |       | 100 psi |       | 75 psi |       |       |       |       |       |
| Wt, lb | 40    | 80    | 103     | 250    | 300    | 450   | 650     | 800   | 1,000  | 1,700 | 2,000 | 3,000 | 4,300 | N/A   |

# PNEUMATIC ACTUATORS

---

## Pneumatic Fail Open and Fail Closed Actuators

- No Lubrication Required
- No piston Rings to Replace, Ever.
- No Wiper Rings
- Fail Safe Spring Return Operation
- Low Friction
- Zero Leakage
- Low Air Consumption
- On / Off or Modulating Service
- Rugged Cast Iron Base
- 303 Stainless Steel Stem
- PVC Cover Tube

These actuators provide outstanding performance in harsh environments. They are available in seven different sizes to match valve thrust and stroke requirements.

**Construction:** The heart of the Onyx actuator is a Firestone Air-Stroke® rubber suspension bag and spring. These air bags are typically used as suspension elements in trucks and buses, with a track record of years of dependable service under adverse conditions. Combining an air bag actuator with a spring provides simple, rugged, dependable actuation.

### DURABLE FOR LONG LIFE

Airstroke actuators are a further application of Firestone's time proven Airide springs for truck and bus suspensions. Long life and durability proven in millions of miles of heavy-duty suspension use under adverse environmental conditions.

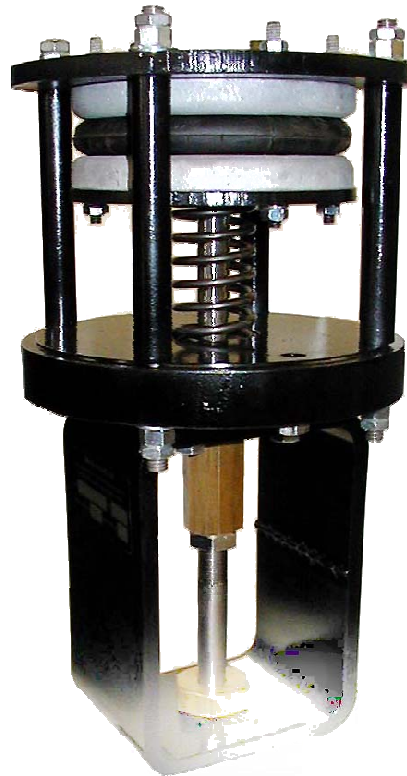
### NO MAINTENANCE OR LUBRICATION REQUIRED

### NO PISTON

Airstroke actuators have no piston or sliding seals. This allows for the design of Airstroke actuators into applications where dirt or grit would destroy the seals on conventional cylinders.

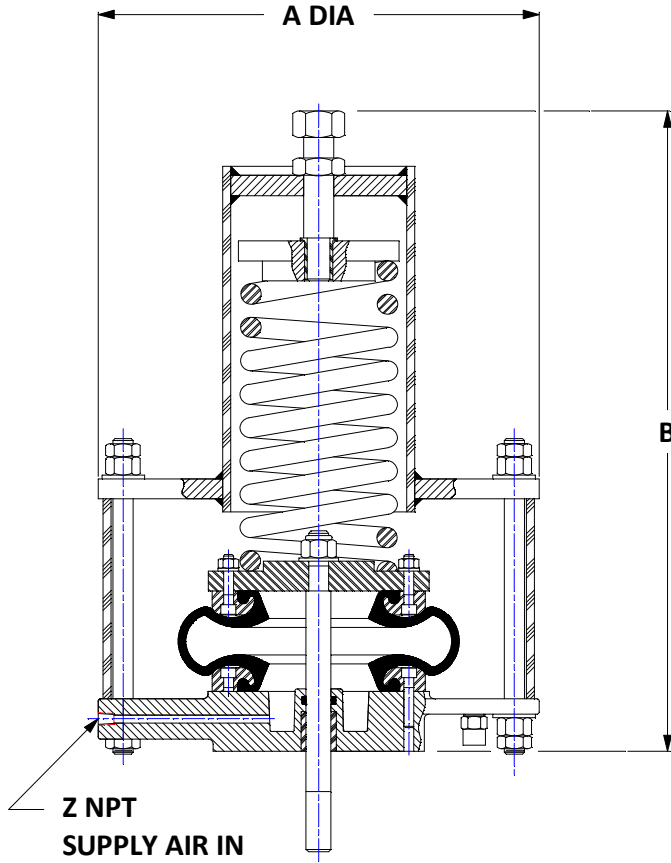
### FRICTION FREE FOR IMMEDIATE RESPONSE

Since Airstroke actuators have no sliding seals, there is no breakaway friction as with conventional cylinders, making them ideally suited for operation with modulating positioners.

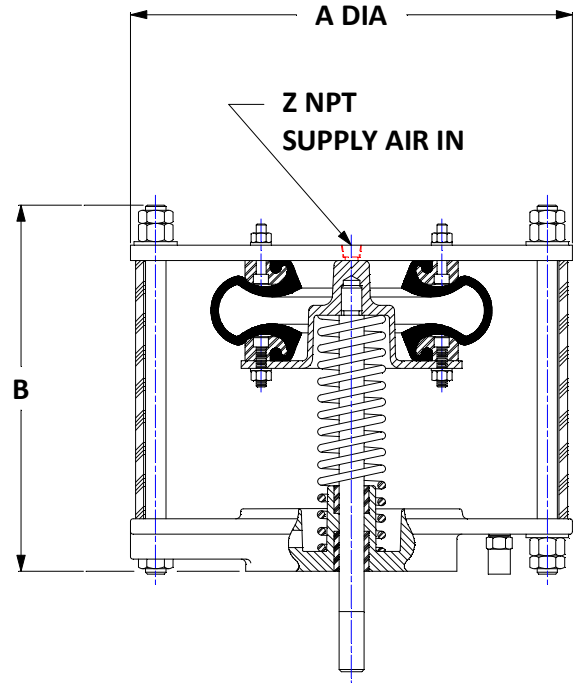


# PFO & PFC ACTUATORS

ACTUATOR WEIGHTS AND DIMENSIONS  
( All dimensions are in inches and weights are in lbs.)



**PFC ACTUATOR**



**PFO ACTUATOR**

| SIZE         | 8     | 12    | 21    | 30    | 36    | 40    | 70    | 80    | 120   | 200   |
|--------------|-------|-------|-------|-------|-------|-------|-------|-------|-------|-------|
| A DIA        | 7.50  | 11.00 | 11.18 | 13.56 | 14.74 | 19.06 | 16.37 | 19.75 | 23.68 | 31.75 |
| B (PFC)      | 10.37 | 22.12 | 27.37 | 34.62 | 37.12 | 62.37 | 50.12 | 52.62 | 59.50 | N/A   |
| B (PFO)      | 7.15  | 9.12  | 11.00 | 13.00 | 16.25 |       | 18.50 | 18.50 | 24.50 | 34.93 |
| Z NPT        | 1/4   |       |       |       | 3/8   |       | 1/2   |       |       |       |
| WEIGHT (PFC) | 25    | 45    | 70    | 156   | 226   | 300   | 355   | 385   | 450   | N/A   |
| WEIGHT (PFO) | 20    | 40    | 46    | 75    | 119   | 130   | 140   | 145   | 200   | 880   |